

# ROSEDALE

## TOWNLIVING BY METRICON

4 BED 3 BATH 2 CAR

### LOT DETAILS

Lot area: from 171sqm

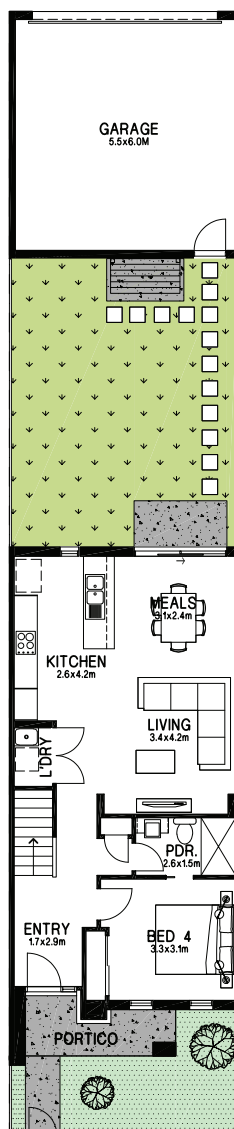
House area: from 188sqm

### INCLUSIONS

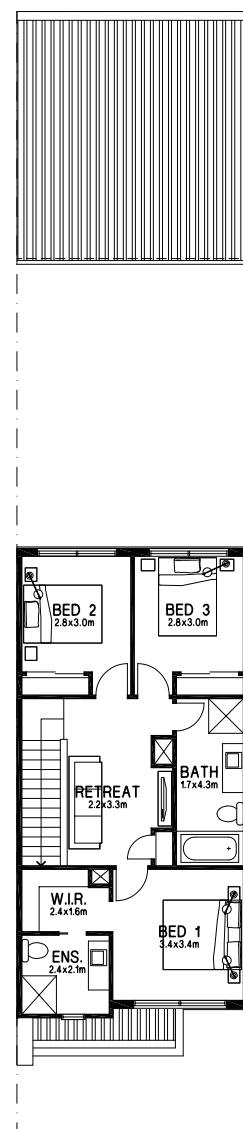
- Kitchen 20mm reconstituted stone bench tops
- LED lighting
- Gas ducted heating to living rooms and bedrooms
- Split system to main living area for cooling
- 600mm stainless steel kitchen appliances
- Landscaping
- Fencing
- Fixed Pricing
- No body corporate and much more



Disclaimer: Sample floor plan only. Siting may change according to lot. End lots window and door locations may vary. See build contract for particulars. Images are for illustrative purposes only and siting & colours may vary.



GROUND FLOOR



FIRST FLOOR